



Environmental Sustainability

Spartan UK Ltd
March 2024



Our Environmental Goals

The environmental impact of the operations at Spartan UK form a central part of our business operations and our future planning.

In recent years we have strived to incrementally reduced our environmental impact by continually improving our activities with the introduction of new technologies and energy efficient processes.

We aim to continually reduce our impact on the environment in the coming years through targeted investment and process improvements where new technologies become available.

Our Sustainability Goals

Steel is an essential material for our society and will be one of the key building blocks to a sustainable future.

At Spartan UK we pride ourselves on being the largest producer of steel plates in the UK supporting a large downstream supply chain of both local and international businesses within the construction, energy, yellow goods and general manufacturing sectors.

Spartan manufactured steel plate has been used in many nationally recognised buildings and bridges, is being used in power generation projects for nuclear and wind turbines, as well as major new road and rail projects in the UK and Europe.



Reduce the negative environmental impact of production



Evaluate the potential environmental impact when planning investment projects



Make efficient use of natural resources, raw materials and energy

An increasing awareness in all aspects of the environment in recent years has led to big strides being made in the construction industries in understanding and improving the sustainability and environmental performance of new buildings.

It is therefore becoming ever more important that at Spartan UK we can demonstrate to our customers the sustainability credentials and environmental impact of the products we produce accurately and quantifiably so that we can be fairly assessed alongside our competitors.

To this end Spartan UK has obtained accreditation to the internationally recognised BES 6001, a standard for Sustainability and Ethical Resourcing and published Environmental Product Declarations (EPD's) for our steel plates. This provides our supply chain the information they need in their decision-making processes to assess the total impact of the buildings they design, build and use.

Our Local Community

We pride ourselves on being a significant local employer and by investing in our existing and new employees through ongoing training and apprentice schemes we can maintain a highly skilled local work force.

As well as our direct employees we rely on and support where possible local third-party employers to help us carry out our day-to-day operations and to transport our goods within the domestic and international markets we support.

By being aware of and considering all aspects of responsible and sustainable resourcing and understanding the direct impact of our operations on the environment and local community we can ensure Spartan UK has a successful future in the steel manufacturing sector of the UK.





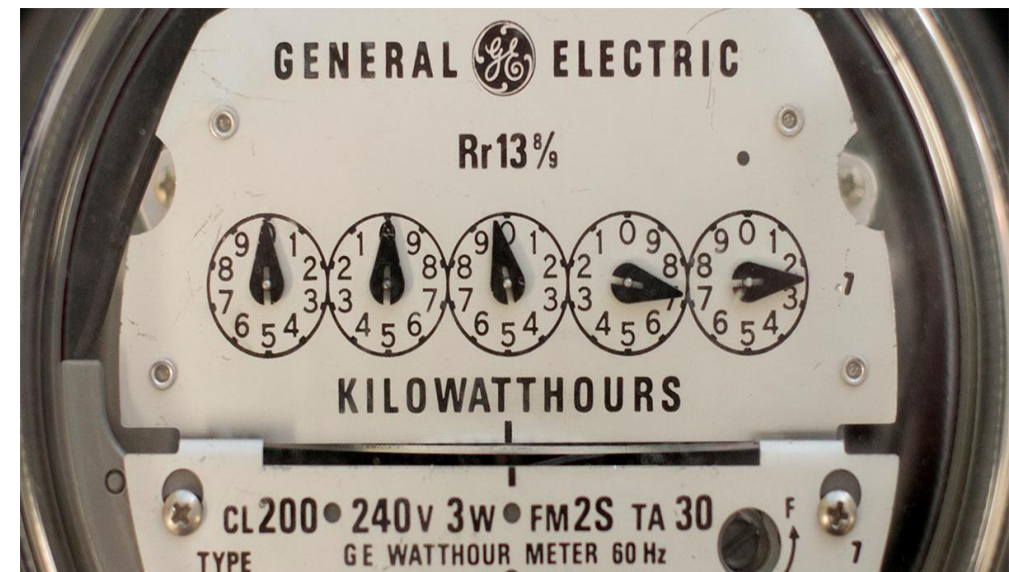
Our Impact on the Environment



Carbon Dioxide Emissions

STREAMLINED ENERGY AND CARBON REPORTING

tCO2e tonnes of CO2 equivalent	2023	2022	2021	2020
Scope 1 Emissions Combustion of gas, fuels and business travel	19,742	18,599	22,089	21,980
Scope 2 Emissions Electricity consumed for own use	1,712	1,544	1,856	2,014
Intensity Ratio tCO2 per t of plate	0.11	0.11	0.11	0.12





Water Use

Integrated Pollution Prevention and Control

Mains Water	2023	2022	2021	2020
Total Water Use M ³	70,379	61,416	73,391	83,348
Intensity Ratio M ³ Per tonne of plate	0.36	0.33	0.34	0.39

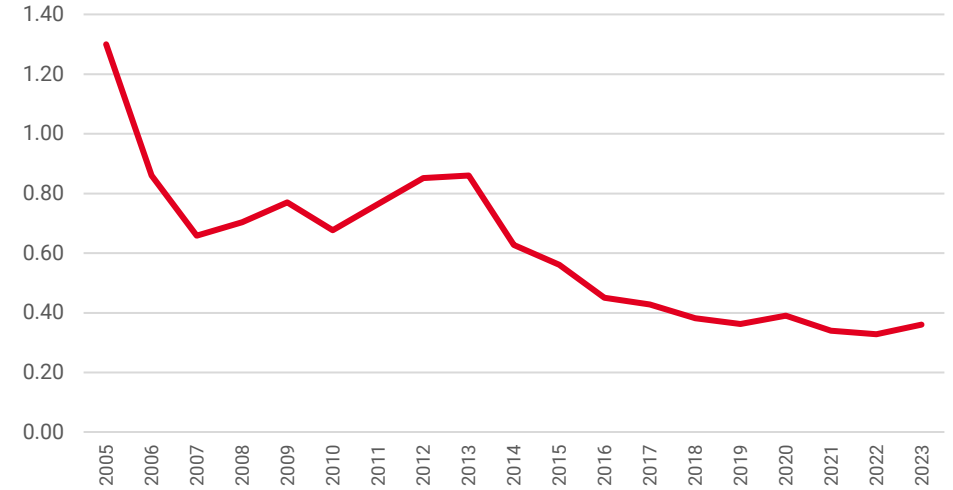


Waste

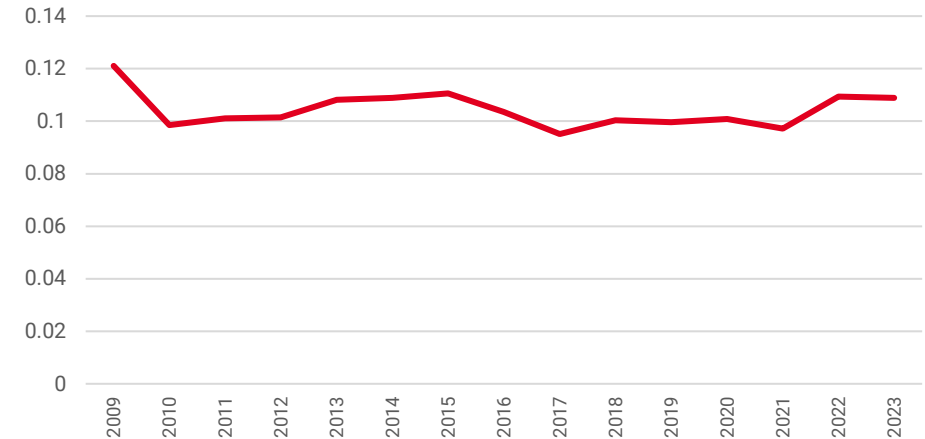
Integrated Pollution Prevention and Control

All Waste (including recyclable scrap metal)	2023	2022	2021	2020
Named Waste Tonnes	21,167	20,361	20,842	21,423
Total Waste tonnes	21,284	20,443	20,950	21,539
Intensity Ratio waste per tonne of plate	0.109	0.109	0.097	0.101

Water Per Tonne Rolled Plate (m3)



Waste per unit output

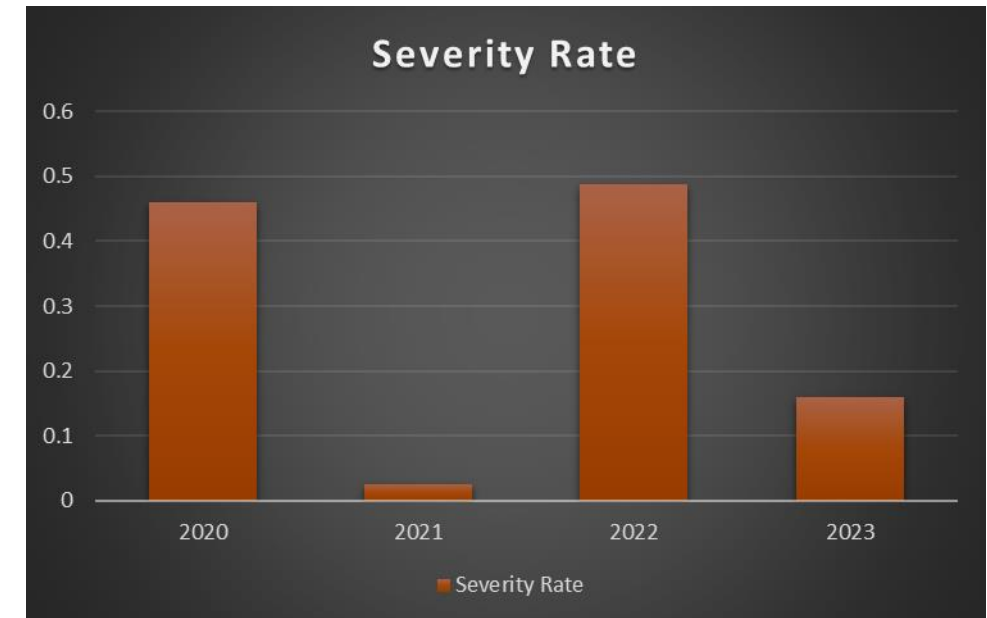
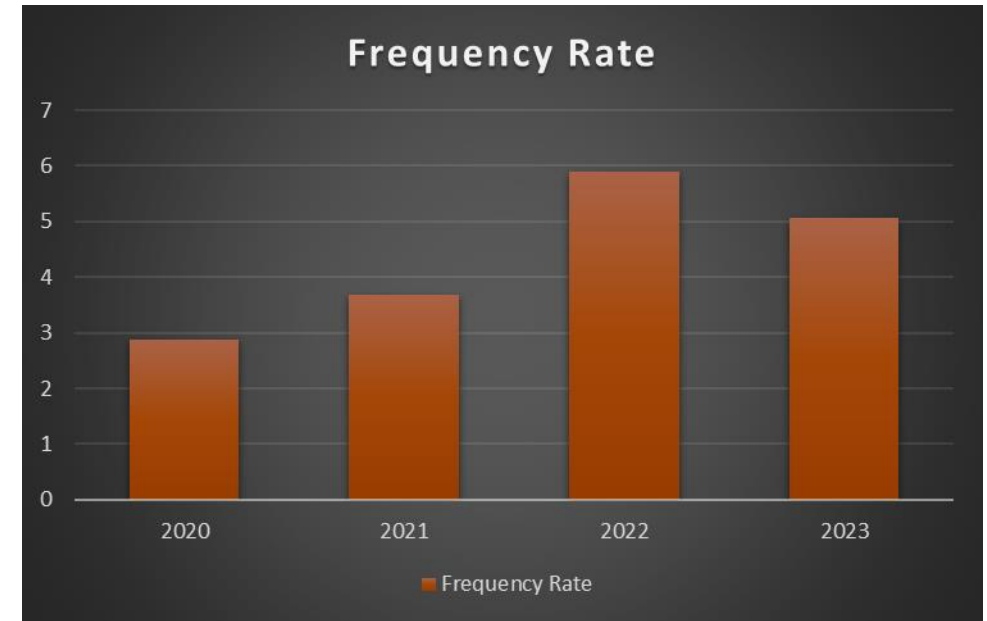




Health and Safety

Internal accident and RIDDOR reporting

Accident Data	2023	2022	2021	2020
Micro Injuries (no lost time)	9	8	8	6
Lost time Injuries (Not RIDDOR)	2	3	1	0
Lost time Injuries (RIDDOR)	1	3	0	1
Total Accidents	12	14	9	7
Lost days due to accidents	36	116	6	112
Frequency Rate Per 100,000 man hours	5.07	5.89	3.68	2.88
Severity Rate Per 1,000 man hours	0.15	0.49	0.02	0.46





For more information please contact

Email: info@spartanuk.co.uk

Phone: +44 (0) 191 460 4245

